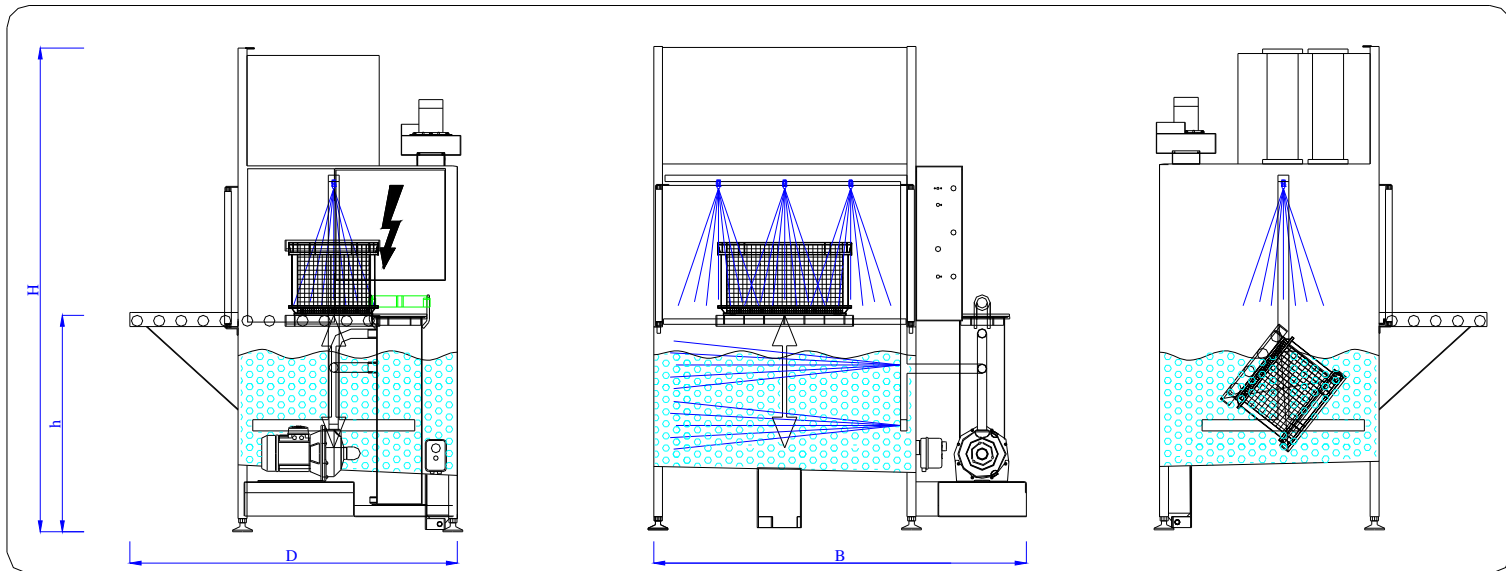




Water-based washing of goods in baskets

Washbear combi



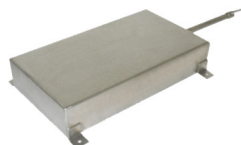
Accessories



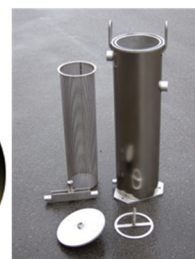
Baskets



Ultrasonic function



Bag filters <0,5mm in one or several steps



Oil separator



Brush gun

Standard equipment:

Stainless steel insulated machine (AISI 304) with external coverplates in stainless steel IIB.
 Electric cartridge with thermostat and weekly timer for heating the washing liquid.
 Extractable washing table to drip catcher.
 Rotational fixture with manual locking device for the basket.
 Galvanized basket 600x400x330mm, mesh 12mm with lid.
 Pneumatic dip-wash function.
 Start/stop-dial with timer 0-30 minutes.
 Pneumatic insulated stainless steel hatch, maneuvered by two hand controller.
 Speed control of the dipping function.
 Integrated stainless steel steam proof fan with automatic start/stop after open/closed hatch.
 Drainage tap on tank.
 Material adapted for water based alkaline washing. Rubber materials in mainly EPDM/
 Viton and plastic in polyethylene (PE).
 Adjustable machine feet.
 Electric box 3x400V, insulation class IP 54.
 Stainless steel pump attached to stainless steel pump shelf with flowjet flushing under liquid surface and rinsing over the surface.

Technical data:

External measurements, Washbear combi in mm, (BxDxH/h).*

Maximum goods weight in kg.

Washing basket i mm.

Pressurized air in bar.

Pressurized air consumption in liters/minute.

Tank volume in liters.

Pump flow in liters/minute.

Pump pressure in bar.

Effect heating cartridge in kW.

Approximate machine weight.

0754S

1700x1500x2180/980

100

600x400x330

6-10

300

300-500

250

2

9

300-400 kg

Accessories:

Brush gun with 5 liters/minute pump.
 Injector gun with adjustable flow, liquid/pressurized air.
 Particle filtration of washing liquid through bag filters in one or several steps.
 Magnetic filter.
 Purification of washing liquid from oil through oilseparator.
 Manual water refill tap.
 Automatic water refill and level control.
 Automatic stop at low liquid level.
 Increased goods weight capacity.
 Other goods dimensions than mentioned here.
 Ultrasonic function.

Milama has as a policy to continuously develop and improve its designs and maintains the right to make changes to the machine and its technical specifications.
 *In standard configuration, accessories may affect the dimensions.

MILAMA

Traktorvägen 12
 SE 226 60 Lund
 SVERIGE

Tel: +46 46 149740
 info@milama.se
 www.milama.se